



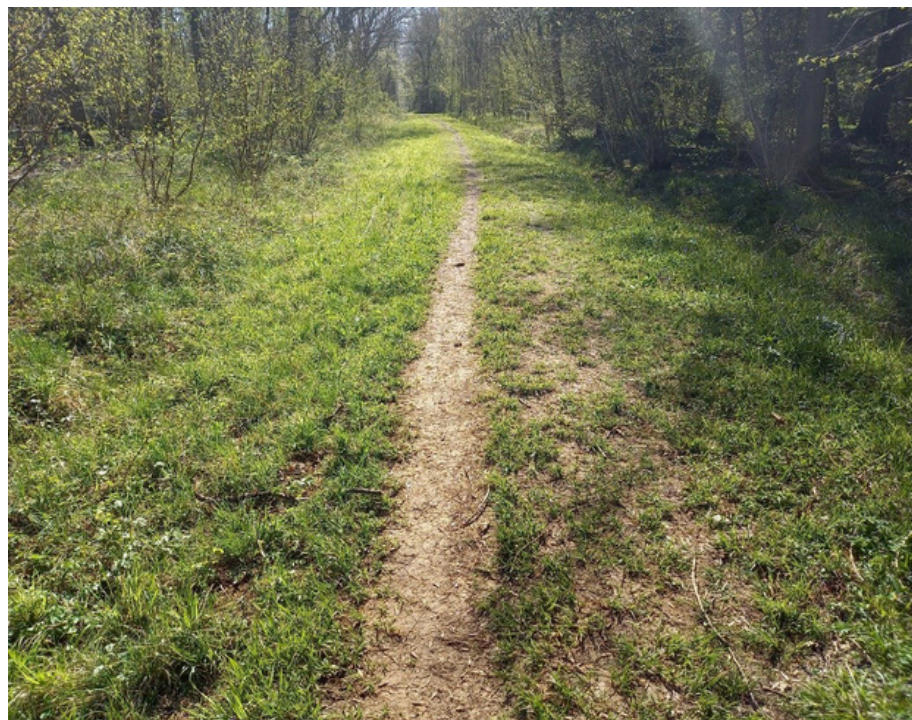
**Wildlife Trust for
Beds, Cambs
& Northants**

This ride is closed while ride reprofiling and regeneration takes place.

The heavy clay nature of the soil, poor ride profile, shady conditions and heavy use in wet winter conditions have left this ride in a poor condition for both wildflowers and pedestrian access. The ride will be re-profiled so that water will drain to the edges, leading to better conditions. Once done the ride will require a period of closure for consolidation and restoration of vegetation. Natural England have given permission for this to take place on the reserve, which is a Site of Special Scientific Interest.



Waresley 2021



A ride with a decent camber - better for preventing muddy conditions



An open, sunny ride - better for wildflowers and insects



Wildlife Trust for
**Beds, Cambs
& Northants**

Notice to all visitors

The Wildlife Trust for Beds, Cambs and Northants



Please be aware paths marked in red are **currently closed**.

Please keep to the permissive path marked in yellow.

Thank you for your understanding.

wildlifebcn.org/waresley

The Wildlife Trust for Bedfordshire, Cambridgeshire and Northamptonshire, The Manor House, Broad Street, Cambourne, CB23 6DH
Tel: 01954 713500 Email: cambridgeshire@wildlifebcn.org Registered charity No. 1000412

