



Wildlife Trust for
**Beds, Cambs
& Northants**

Registered Charity No. 1000412

.....
THE NEWSLETTER OF THE WILDLIFE
TRUST BCN CORPORATE MEMBERS
.....

ISSUE 49 AUTUMN 2022

INSIDE THIS ISSUE:

.....
Wild Wellbeing at Work

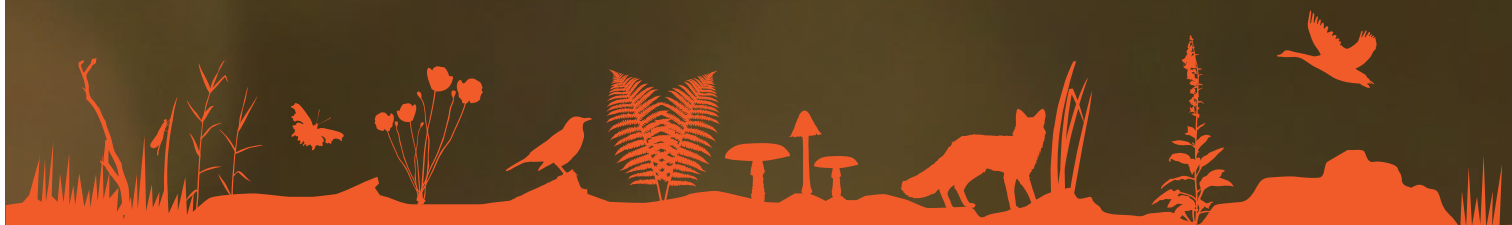
.....
Local conservation news

.....
The changing world of work

WILDLIFE

.....

AT WORK





Welcome back to the Wildlife at Work newsletter.

Since the first pandemic outbreaks we have seen many changes to the workplace, and there are few staff who have not experienced an impact of some kind from the effects of the Coronavirus. Organisations have initiated working from home, and hybrid working. We have observed social distancing, wearing masks with limited social interaction and online meetings have become normal. The cultural changes and feeling of isolation (or freedom, for some) have led to many people reviewing the relationship they have with their working environment and their living environment, and as a consequence the Wildlife Trusts have received feedback that outdoor spaces and spaces in nature are more precious to people than ever before. The restorative effects of taking time 'out', going for a walk, observing nature and spending time in nature are widely accepted.

Providing staff with the opportunities to experience time in the outdoors and making nature accessible is a real benefit of being a corporate member of the Wildlife Trust. The article on Wellbeing at Work may strike a chord. If so, you can take action by offering a Wild Work Day to your organisation, and we would encourage you to share our Wildlife news, updates and resources with all staff. The Wildlife Trust BCN corporate team will be offering digital alternatives for sustainable considerations. If you'd like more information, please reach out to us at corporate@wildlifebcn.org.

Kind regards
The Wildlife Trust BCN Corporate Team



The scale and complexity of today's environmental crisis requires us to do more.

1% for the Planet has been established to make investments in companies developing solutions to combat climate change, protect resources and drive environmental stewardship, while screening out companies that have heightened exposure to climate-related risks or fossil fuels.

So you can now donate 1% of company profits to the Wildlife Trust BCN, or similar charity with this innovative scheme, which helps to drive more environmentally responsible business practices, with a particular focus on greenhouse gas emission reduction.

1% for the Planet - Homepage
(onepercentfortheplanet.org)

2022 NEW MEMBERS

A warm welcome to some new corporate members for the year, so far.



Warners Distillery have joined at Partner level, demonstrating their corporate responsibility by enhancing the environment for wildlife and gaining recognition for building an environmentally sustainable business.

Warners of Northampton make 'epic drinks, in harmony with nature'. They are gin distillers with a 100% natural range of spirits made from botanicals grown at their farm in Harrington, Northamptonshire.

Farm-grown ingredients are also used in their non-alcoholic range.

Warners have a strong team ethos and have also invested in bee keeping, with colonies at Falls Farm, pollinating the fruits and flowers.



Photos: Warners Distillery

Welcome also to **Eastern Tree Surgery** and **Cambridge Business Park**, both joining at a Supporter level.



Eastern Tree Surgery work throughout Cambridgeshire, and the eastern region, offering professional and responsible arboricultural services, and are keen to promote the true value and importance of trees within both the urban and rural environment.



Cambridge Business Park is a premium business facility, located in the heart of the Cambridge business community, which is looking to engage businesses on its site with the Wildlife Trust BCN.



We are also pleased to welcome **Mulch Ado** who have joined as a corporate member and are supporting us with a fantastic 10% of their profits from their gardening business.

Mulch Ado is run by expert botanist Dr Maplestone supplying Ely and the surrounding villages with landscaping and gardening work.

By Supporting the Wildlife Trust BCN all our new members have taken steps to help create a better more sustainable future for local wildlife that the communities and businesses in Bedfordshire, Cambridgeshire and Northamptonshire can enjoy.



Cover photo credit:
Russell Savory

Contact Us

For more information on how your business can support the Wildlife Trust visit or contact:

corporate@wildlifebcn.org
www.wildlifebcn.org

[in /wildlifebcn](https://www.linkedin.com/company/wildlifebcn) [ig /wildlifebcn](https://www.instagram.com/wildlifebcn) [tw @wildlifebcn](https://twitter.com/wildlifebcn)

Nathan Long, Business Partnerships Manager
Mobile: 07517 911594

Fiona Hearn, Business Partnerships Officer
Mobile: 07923 438331



BEDFORDSHIRE NEWS

BOARDWALK BONUS AT FLITWICK

Improvements to infrastructure at Flitwick Moor, Bedfordshire have been made to create a new stretch of boardwalk with support from generous grant funding totalling £55,500 from a variety of sources including the Veolia Environmental Trust, The Wixamtree Trust and partners at Central Bedfordshire Council.

This new 250m stretch has created an all season route, joining the car park with the meadows and linking up with existing structures at the heart of the moor.



Photos: Eamonn Lawlor

In recent years there has been a substantial increase in numbers of people using the site leading to extra pressure on the footpath network which coupled with wet, mild winters has led to a delta of routes forming as visitors try to avoid the muddy spots and standing water.

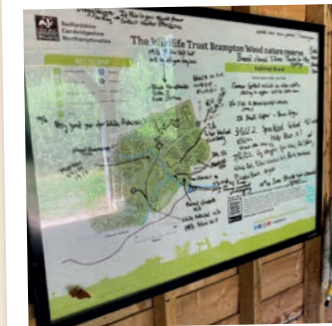
Aidan Matthews, Bedfordshire Senior Reserves Manager says: "The true test will come with the onset of wetter ground conditions – the materials used will ensure the long life of the boardwalk: recycled plastic sleepers will provide a solid base for many years to come and the support timbers have been enhanced to limit rotting and weakness. The top surface boards are of an increased depth and have a grip strip to provide safe footing and security for all users. Additionally the boardwalk has ramps at each end to accommodate users with buggies and wheelchairs. Whilst it's not feasible to access all of the site, we



have tried to make it as accessible as possible to ensure that visitors will continue to enjoy coming here for years to come."

Flitwick Moor is a beautiful, primeval site with a wide range of habitats for wildlife – running streams fed by acidic aquifers, the River Flit flowing from its chalk sources along the foot of the Chilterns, sunken and saturated ground of the former peat extraction areas slowly being colonised by trees and plants, open wet marsh and reed bed, grazed meadows and stands of mature trees including oak, silver birch and alder. A Site of Special Scientific Interest (SSSI), the Trust owns and manages the site balancing the management of this threatened habitat with the safe and enjoyable access by local residents.

Photos: Eamonn Lawlor, Reserves Manager



CAMBRIDGESHIRE NEWS

SUMMER TEAM WORK AT BRAMPTON WOOD

At Brampton Wood tree management has included felling different sections of trees on rotation – some removed as they are non-native conifers and some thinned out to promote new growth. Both of these conservation methods can yield large amounts of wood.

Dead wood is important for many forms of life in a woodland and in some instances it can be used as firewood and charcoal. With the help of volunteer site wardens, the reserves team used machinery to pull the logs onto paths for easier access, before transporting them to our wood yard for later collection.

Compliments have been flooding in from visitors to Brampton Wood this summer, many of whom have been travelling far and wide to catch glimpses of, amongst others, the Black Hairstreak butterfly. Our wardens have advised they showed in good numbers. The Silver-Washed Fritillary was also present in large numbers making good use of the grassland

rides and bramble patches. In fact, for anyone visiting it was almost impossible to miss them – you only had to step up to our sightings board near the entrance and they were there waiting for you (see photo below). Thanks to our wardens, nothing gets missed!



NORTHANTS UPDATE

LILBOURNE MEADOWS

Lilbourne Meadows Nature Reserve is being created as mitigation for the Daventry International Freight Transport Hub (DIRFT 3) development by growing a natural physical shield and wild space for the people of Lilbourne Village. It is already becoming important for the creation of habitats for wildlife.

Prologis and the Wildlife Trust for BCN have been working in collaboration over the years to progress the site from design to reality, and it is slowly taking shape – with the livestock barn, grazing animals on site and wildlife starting to take up residence.

Work is still being done to improve drainage and prevent flooding. Grassland management is very important and the sheep who help with grazing have also been lambing successfully. Wildlife Trust conservation sheepdog Kez has been assisting with sheep herding, especially during the shearing season which is extremely busy.

All the lambs have been vaccinated, wormed, treated against fly and the crossbred lambs have all been weighed to monitor progress.

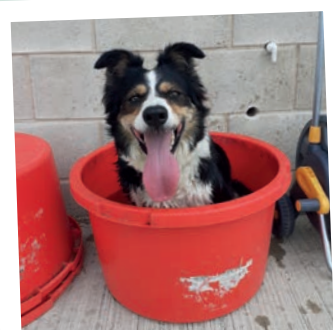
Shearing has also been completed for another year and all the fleeces now need to be sorted with the bulk going to the wool board and the nicest ones being sold individually to local hand spinners and craft people.

Hay is cut and stored in barns for the wintering season.

Creeping thistle seems to have had a very good year – despite being a good nectar source this plant can rapidly spread, taking over an area. We have been trying to reduce levels in the fields, especially the hay meadows, to allow the other less competitive plants a chance to thrive.

Monitoring has been conducted with specialist volunteer assistance. Rare birds, great crested newts, bats and invertebrate numbers have been increasing as the site offers more habitat for wildlife and greater biodiversity. It is also planned to continue surveying the hedgerows – this will enable us to draw up a restoration and management plan for the hedgerows going forward.

During the heat of the summer it is important for everyone to keep cool!



Photos: Jane Pearman, Lilbourne Meadows Manager

2022 PHOTOGRAPHY COMPETITION

Stunning Results!

Responding to this year's theme 'Nature from every angle', we received a diverse and colourful array of images from across our three counties.

The standard was extremely high, presenting difficult decisions for our expert judges: Owen Howell, proprietor of **Campkins Cameras**; Chris Galvin of **Opticron**; and Sarah Lambert, Ecological Consultant. They all praised the quality

and breadth of images submitted, commenting on how tough it was to decide with so many great shots to choose from.

The final 24 will feature in our Wildlife Trust BCN 2023 calendar, topped by three winning images, which bag wonderful prizes generously supplied by sponsors **Canon UK** in association with Campkins Cameras and supporters Opticron.

Second place

Second place goes to Peter Swan's stunning rosemary beetle spotted at Wimpole Hall, Cambridgeshire, a species originally native to the Mediterranean region but which can now be found throughout England. Peter wins a Canon PowerShot ZOOM monocular camera and £200 worth of optical equipment from Opticron.



Credit: Peter Swan

Third place

Carl Everitt wins third place with his starling blend shot, a combination of multiple images to show the flight path of the starling murmuration at Summer Leys. Carl wins £200 worth of optical equipment from Opticron.



Credit: Carl Everitt

First place

In first place, congratulations to David Harris for his 'first and only' shot of a mating pair of banded demoiselle damselflies, which he has been searching for since 2008 and finally captured at our Summer Leys reserve, Northants. David wins a Canon EOS 850D camera with EF-s 18-135mm f3.5-5.6 IS USM Lens.

David said "I am delighted...as it was the only image I entered this year! I love being a member of the BCN Wildlife Trust and I may be found often on hands and knees at Summer Leys, chasing bugs and other creepy crawlies :) Thank you!"



Credit: David Harris

All of the photos demonstrate the excellent photographic skills of the 20 finalists, all of whom employed impressive techniques to achieve unique shots and whose images will be included in the 2023 calendar, which goes on sale in Winter. Go to our website for more details.

WILD WELLBEING AT WORK

Fiona Hearn, Business Partnerships Officer, Wildlife Trust BCN

Many of us enjoy spending time in nature – it can lift our spirits and help us to relax.

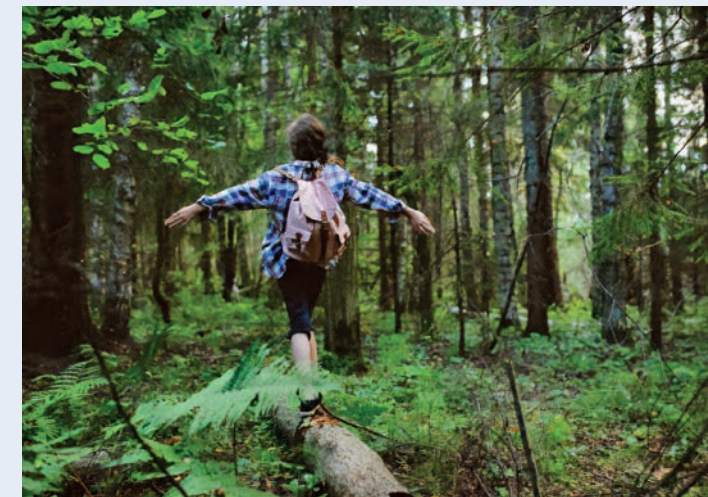
I went to a natural mindfulness session with nature connection guide, Nicola Scholfield, on our staff day at one of our nature reserves. It was just a taster session and I wasn't sure what to expect. There were about a dozen other staff in the group and I got to know them, as we chatted and walked to a pretty part of the reserve.

During the session we were encouraged to notice nature using our senses, and to experience nature in the moment.

Lying in the grass felt a long way from the keyboard in my office – but as I started listening to all the sounds around me, looking at the trees and feeling the warmth of the sun I started to tune in to the sights and sounds around us, and felt very relaxed. We spent some time talking together – it was surprising just how different everyone's experiences felt, yet so positive. It was quite inspiring!

Overall, that short break in an environment of peace, was a calmness that we all shared. And we saw some amazing wildlife too!

Nicola explained: "People can be amazed at the difference that simply slowing down and noticing nature can make to how they feel.



"I find that at the beginning of a session, people can feel a little self-conscious. After all, being slow and quiet in nature is new to many people, especially when with others. But it doesn't take long for most people to start to relax and begin to share the experience together as a group."

More and more organisations see the link between connecting employees to nature, and for quite a few different reasons. There's the obvious team-building events which are the get-togethers everyone remembers, the special days out that bond people in ways you could never anticipate and bring people together who might never talk in the office.

We also now know that feeling connected to nature is good for our mental health and wellbeing. Nature experiences can help us feel relaxed and recharged, improving our mood and reducing our stress levels. They can even help us start to see things from a new perspective, and help to boost our energy, creativity and concentration levels.

The Wildlife Trust BCN is proud to offer Wild Wellbeing Days to our members; these focus on mental wellbeing through building a connection with nature. They are run by a professional Wellbeing Practitioner and are fantastic days to help support good mental health and boost productivity with your staff.

Get in touch with us at corporate@wildlifebcn.org to discuss booking a Wild Wellbeing Day for you and your team.

AGM REMINDER

Don't forget, you can still join us for inspiration and insight about what the Trust is doing for local wildlife with your support, plus a great chance to mingle with other Trust members, volunteers, staff and trustees.

This year we will be at **The Northampton School for Boys, Billing Road, Northampton, NN1 5RT**, starting at 9.30am, on Saturday 8th October with tea and coffee followed by talks from a range of speakers including this year's guest, **Kathryn Brown, OBE, Director of Climate Change and Evidence at the Wildlife Trusts nationally**. She will talk about the Trusts' role in tackling the climate crisis.

Please visit our website to book onto the event at www.wildlifebcn.org/AGM



THANK YOU

Thank you to all our corporate members, who form some of our key stakeholders at the Wildlife Trust membership and offer crucial partnership qualities, as well as much needed income for conservation projects and opportunities for nature-based solutions.

PARTNERS

- Arm Holdings
- The Biodiversity Consultancy
- Ewing Associates
- Fujifilm UK Ltd
- Prologis UK Limited
- Warners Distillery

SMALL BUSINESS SUPPORTER SCHEMES

- Fill Refill Co – Donating 1% of profits through the 1% for the Planet
- Mulch Ado – Donating 10% of profits to the Wildlife Trust

INVESTORS

- Anglian Water Services Ltd
- Cambridge University Press & Assessment
- Colpac Ltd
- HCR Hewitsons
- Scott Bader
- Scudamore's Punting Co Ltd
- UK Power Networks
- Unilever Research Colworth

CORPORATE SUPPORTERS

- Alpro UK Ltd • Athene Communications • Cambridge Business Park
- Cambridge Econometrics Ltd • Cambridge Steiner School
- Cambridge Water Company • Campkins Cameras • Center Parcs Woburn Forest
- Cranfield University • Dawson Wam • Dojima Sake Brewery
- Downing College Cambridge • Eastern Tree Surgery • Granta Park
- Greens of Soham Ltd • Holidaycottages.co.uk • Hunts Wildlife Landscapes
- Jesus College • The Jordans & Ryvita Company Ltd
- The Marshall Group of Companies • Perkins Engines Co Ltd
- Richard Buxton Environmental & Public Law • RWE Generation UK
- South Cambs District Council • Spendlove Contracting • Tarmac
- University of Northampton • Wellcome Genome Campus (Hinxton Hall)
- Whittlebury Park