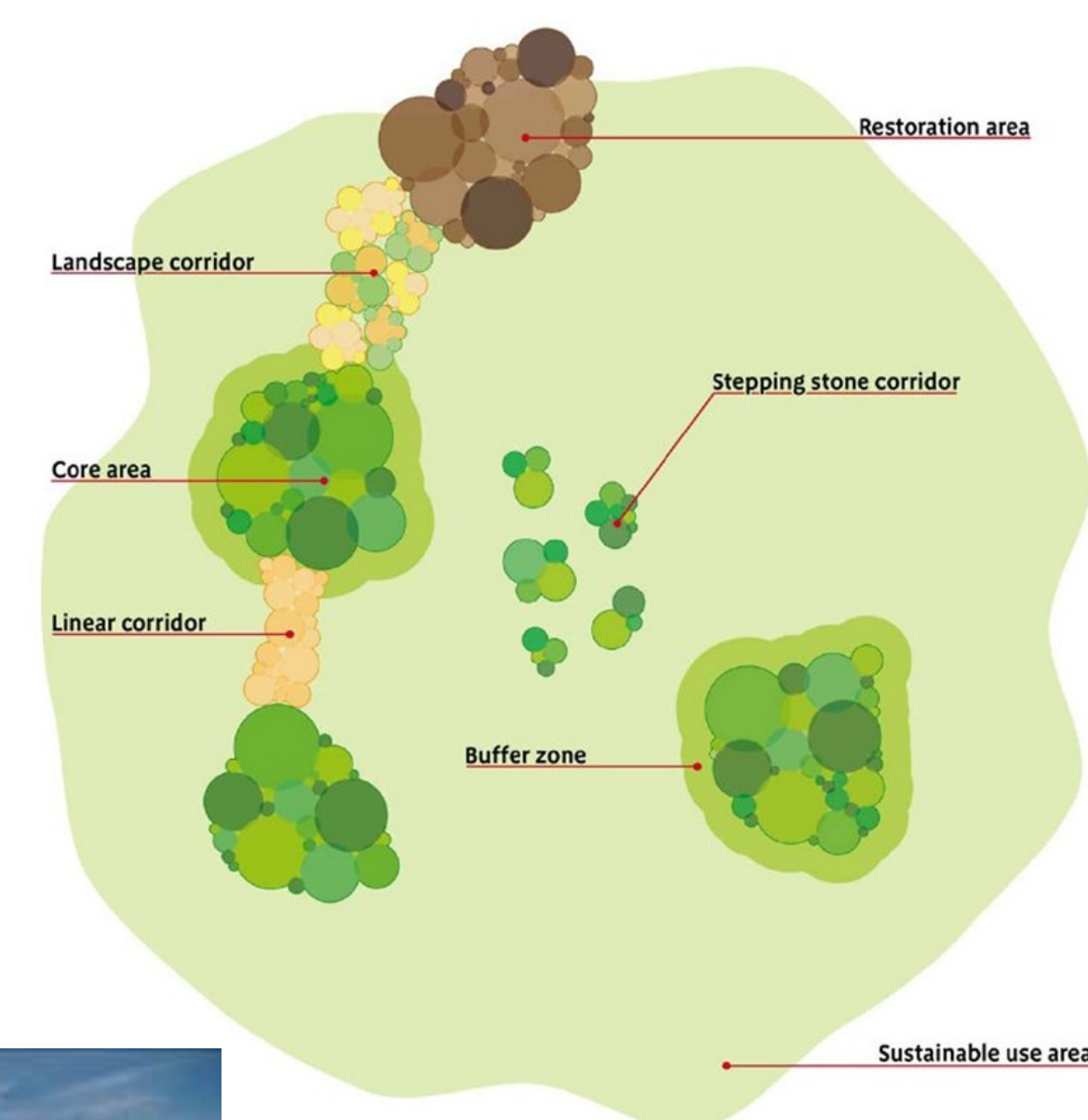


Objective 4: Land Management

The Issue; Strengthening a fragmented ecological network through effective engagement with farmers and landowners.

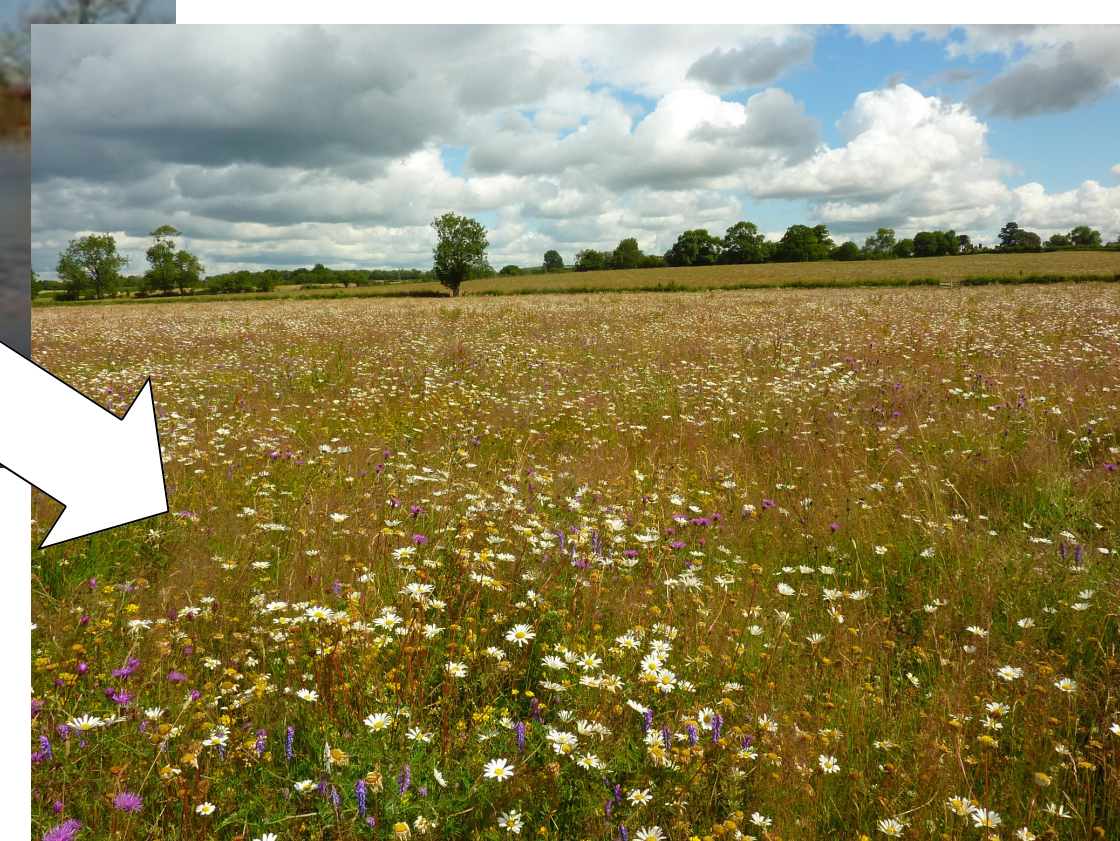
The Nene Valley is a vital wildlife corridor with an internationally important habitat at its core, however, many key habitats remain small and fragmented, hindering its ability to work as a functioning ecosystem and landscape corridor. Many sites are declining due to a lack of management, and disturbance issues, or are under pressure from development and land use change. Land outside of the gravel pits is dominated by intensive agriculture.



Achievements;

Bigger;

- ◆ 10 HLS applications were successfully submitted through Year 1 and 2 of the project covering 1800ha of land
- ◆ HLS applications include management and restoration of 214ha of priority habitat such as lowland meadow, fen, parkland and floodplain grazing marsh.
- ◆ 3 further applications in year 3 securing long-term management of Achurch Meadow (Northants largest Meadow SSSI & important breeding wader site) and Twywell Hills and Holes (Calcareous grassland SSSI)



Meadow creation on arable land in the Nene Valley



Seed Harvesting for meadow restoration

Better;

- ◆ Meadow restoration at three sites, Kings Cliffe, Badby & Upper Heyford, totalling 11.6ha
- ◆ Pond and backchannel restoration undertaken, further hydrological works planned to improve wet woodland at Lamport
- ◆ Floodplain meadow restoration planned at large site (14ha) on the banks on the Nene overlooked by Fotheringhay Castle
- ◆ Floodplain meadow restoration underway at Kingsthorpe as part of the Coronation Meadows project using locally harvested seed

Joined Up;

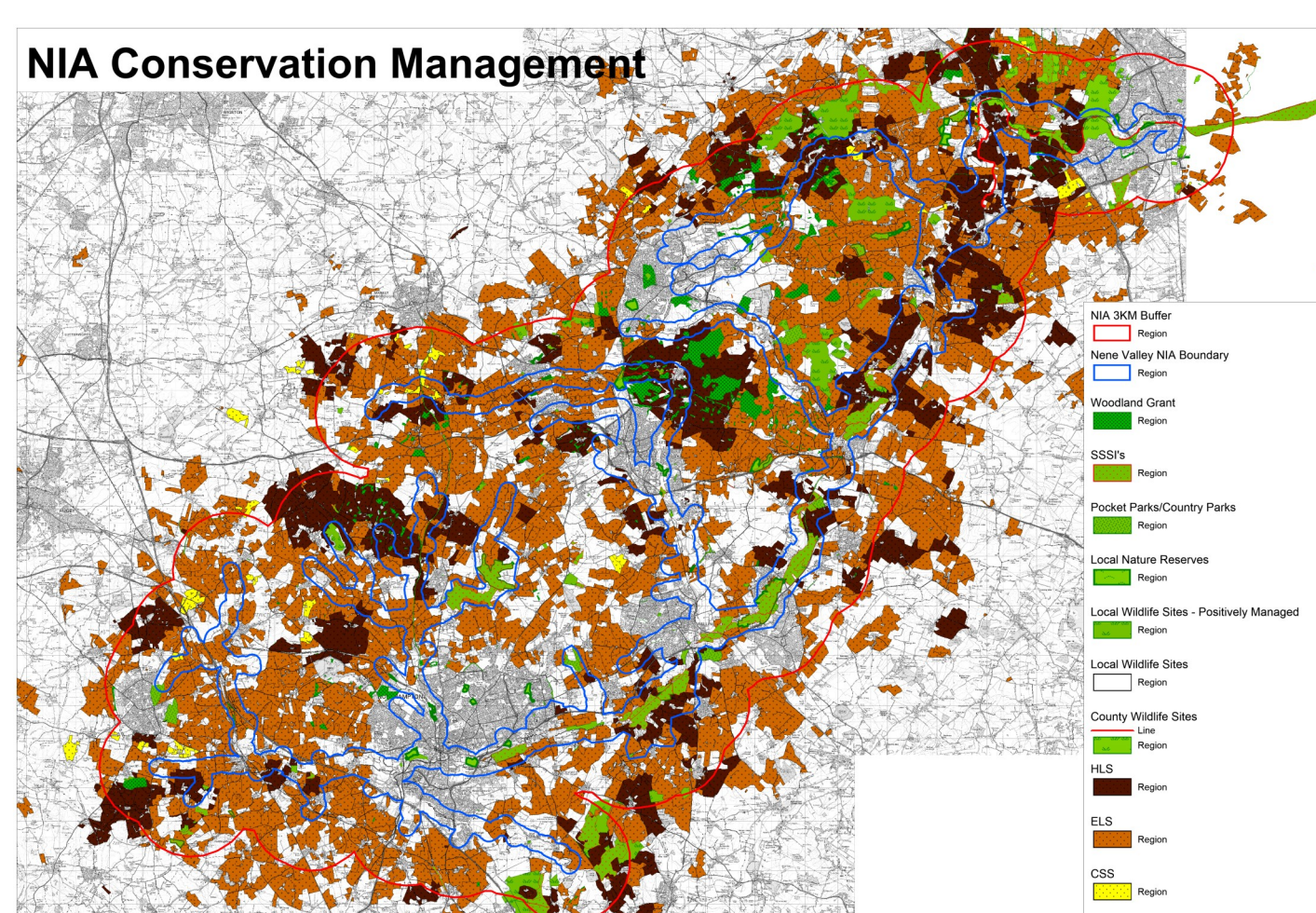
- ◆ Three Lowland Meadows created on formerly arable land at Orton, Upper Heyford & Stanwick totalling 10.9ha.
- ◆ Improved linkage across the HLS schemes through hedgerow restoration and arable margins

Landowners Engaged;

- ◆ Maps produced showing land in stewardship to identify gaps and allow landowners to see how their land fits in the bigger picture
- ◆ Successfully working group set up including CSF officers, landowner and conservation organisation representation



Achurch Meadow SSSI, now in HLS



Map showing land in positive conservation management across the NIA and surrounding catchment

Ambitions for 2015—2020

- ◆ Continued landowner engagement building on current relationships
- ◆ Bring more priority habitat in positive management through the new stewardship scheme
- ◆ Habitat creation & restoration of priority habitat to further strengthen the ecological network
- ◆ Ensure no habitat loss as sites dropout of ELS

Project Lead: Wildlife Trust

Project Partners; River Nene Regional Park, Natural England



**Bedfordshire
Cambridgeshire
Northamptonshire**



**RIVER NENE REGIONAL PARK
INSPIRED SPACES**

